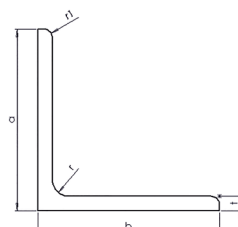
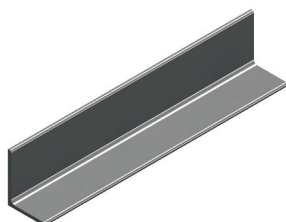


Angolari a lati uguali *Equal angles*



PROFILO PROFILE	a (mm)	b (mm)	t (mm)	r (mm)	r1 (mm)	Sez (cm ²)	Massa (Kg/m)
120x120x10	120	120	10	13	6.5	23.2	18.2
120x120x12	120	120	12	13	6.5	27.5	21.6
120x120x14	120	120	14	13	6.5	31.8	25
120x120x15	120	120	15	13	6.5	33.9	26.6
120x120x16	120	120	16	13	6.5	36	28.3
130x130x10	130	130	10	14	7	25.2	19.8
130x130x12	130	130	12	14	7	30	23.5
130x130x14	130	130	14	14	7	34.7	27.2
130x130x15	130	130	15	14	7	37	29
130x130x16	130	130	16	14	7	39.3	30.8
140x140x10	140	140	10	15	7.5	27.2	21.4
140x140x12	140	140	12	15	7.5	32.4	25.4
140x140x13	140	140	13	15	7.5	35	27.4
140x140x14	140	140	14	15	7.5	37.5	29.4
140x140x15	140	140	15	15	7.5	40	32.4
140x140x16	140	140	16	15	7.5	42.5	33.3
150x150x10	150	150	10	16	8	29.3	23
150x150x11	150	150	11	16	8	32.1	25.2
150x150x12	150	150	12	16	8	34.8	27.3
150x150x13	150	150	13	16	8	37.6	29.5
150x150x14	150	150	14	16	8	40.3	31.6
150x150x15	150	150	15	16	8	43	33.8
150x150x16	150	150	16	16	8	45.7	35.9
150x150x18	150	150	18	16	8	51	40.1
150x150x20	150	150	20	16	8	56.3	44.2
180x180x14	180	180	14	18	9	48.8	38.3
180x180x15	180	180	15	18	9	52.1	40.9
180x180x16	180	180	16	18	9	55.4	43.5
180x180x18	180	180	18	18	9	61.9	48.6
180x180x20	180	180	20	18	9	68.3	53.7
180x180x22	180	180	22	18	9	84.7	58.6
200x200x14	200	200	14	18	9	54.4	42.7

PROFILO	a (mm)	b (mm)	t (mm)	r (mm)	r1 (mm)	Sez (cm²)	Massa (Kg/m)
200x200x15	200	200	15	18	9	58.1	45.6
200x200x16	200	200	16	18	9	61.8	48.5
200x200x18	200	200	18	18	9	69.1	54.2
200x200x20	200	200	20	18	9	76.3	59.9
200x200x22	200	200	22	18	9	83.5	65.6
200x200x24	200	200	24	18	9	90.6	71.1
200x200x25	200	200	25	18	9	94.1	73.9
200x200x26	200	200	26	18	9	97.6	76.6
200x200x28	200	200	28	18	9	104.5	82
200x200x30	200	200	30	18	9	111.3	87.4
200x200x32	200	200	32	18	9	118.1	92.7
200x200x34	200	200	34	18	9	124.8	97.9
250x250x18	250	250	18	18	9	87.1	68.4
250x250x20	250	250	20	18	9	96.3	75.6
250x250x22	250	250	22	18	9	105.5	82.8
250x250x24	250	250	24	18	9	114.6	90
250x250x25	250	250	25	18	9	119.1	93.5
250x250x26	250	250	26	18	9	123.6	97
250x250x28	250	250	28	18	9	132.5	104
250x250x30	250	250	30	18	9	141.3	111
250x250x35	250	250	35	18	9	163.1	128

PRODOTTO PRODUCT	NORME DI RIFERIMENTO TOLERANCES ON SHAPE AND DIMENSIONS	MARCHE E QUALITÀ ACCIAIO GRADES
TRAVI HE AD ALI LARGHE PARALLELE WIDE FLANGE BEAMS	Dimensioni secondo UNI EN 10365; tolleranze dimensionali e di forma secondo UNI EN 10034; qualità commerciale acciaio secondo UNI EN 10025. <i>Dimensions according to UNI EN 10365; dimensional and shape tolerance according to UNI EN 10034; steel grades according to UNI EN 10025</i>	S235 JR S235 J0
TRAVI IPE AD ALI STRETTE PARALLELE PALLALEL FLANGE I SECTIONS	Dimensioni secondo UNI EN 10365; tolleranze dimensionali e di forma secondo UNI EN 10034; qualità commerciale acciaio secondo UNI EN 10025. <i>Dimensions according to UNI EN 10365; dimensional and shape tolerance according to UNI EN 10034; steel grades according to UNI EN 10025.</i>	S235 J2 S275 JR
TRAVI IPN AD ALI INCLINATE TAPER FLANGE I SECTIONS	Dimensioni secondo UNI EN 10365; tolleranze dimensionali e di forma secondo UNI EN 10024; qualità commerciale acciaio secondo UNI EN 10025. <i>Dimensions according to UNI EN 10365; dimensional and shape tolerance according to UNI EN 10279; steel grades according to UNI EN 10025.</i>	S275 J0 S275 J2
TRAVI UPN AD ALI INCLINATE TAPER FLANGE U CHANNELS	Dimensioni secondo UNI EN 10365; tolleranze dimensionali e di forma secondo UNI EN 10279; qualità commerciale acciaio secondo UNI EN 10025. <i>Dimensions according to UNI EN 10365; dimensional and shape tolerance according to UNI EN 10279; steel grades according to UNI EN 10025</i>	S355 JR S355 J0 S355 J2
ANGOLARI A LATI UGUALI EQUAL ANGLES	Dimensioni secondo EN 10056-1; tolleranze dimensionali e di forma secondo EN 10056-2; qualità commerciale acciaio secondo UNI EN 10025. <i>Dimensions according to EN 10056-1; dimensional and shape tolerance according to EN 10056-2; steel grades according to UNI EN 10025.</i>	S355 K2 S355 J0W
ANGOLARI A LATI DISUGUALI UNEQUAL ANGLES	Dimensioni secondo EN 10056-1; tolleranze dimensionali e di forma secondo EN 10056-2; qualità commerciale acciaio secondo UNI EN 10025. <i>Dimensions according to EN 10056-1; dimensional and shape tolerance according to EN 10056-2; steel grades according to UNI EN 10025.</i>	S355 J2W S355 J0WP